



Fearless & Fun
... LINGERIE ...

Red Rose
COLLECTION



FAF-H141

Size: One Size fits most: Height 5' to 5'10", Weight 90 to 155 lbs.

Color: Red/Black.

Peek-a-Boo Polka Dot Cotton Jersey cups and waist detail chemise with Faux Pearl Beads and Lace skirt bottom, adjustable garters, Satin Ribbon bows. Hook and eye back closure and elastic neck ties. Leg accessory # FAF-H102 is not included.



FAF-H146

Stretch Lace halter tie bra with matching high waist open crotch and back panties with adjustable back Satin Ribbon bow.

Size: One Size fits most: Height 5' to 5'10", Weight 90 to 155 lbs.

Color: Red/Fuchsia.



FAF-H143

Size: One Size fits most: Height 5' to 5'10", Weight 90 to 155 lbs.

Color: Red/Black.

Lace and Pearls bra two piece set with matching crotchless g-string bottom. Faux Pearl Bead details and lots of Satin Ribbon bows. Hook and eye back closure.



FAF-H148

Stretch Lace and Faux Pearl Beads top and matching skirt set with garters in the back. Bra has hook and eye closure for size adjustment.

Size: One Size fits most: Height 5' to 5'10", Weight 90 to 155 lbs.

Color: Red/Fuchsia.



FAF-H159

Size: One Size fits most: Height 5' to 5'10", Weight 90 to 155 lbs.

Color: Red/Fuchsia.

Stretch Lace chemise with Faux Pearl Beads and Satin Ribbon Bow accents. Comes with hook and eye closure back for size adjustment.



FAF-H150

Our most beautiful Stretch Lace and Faux Pearl beads chemise with spider web elastic straps and Satin Ribbon bows. Garters on the sides and neck/bra ties for size adjustment. Leg accessory style FAF-H102 is not included.

Size: One Size fits most: Height 5' to 5'10", Weight 90 to 155 lbs.

Color: Red/Black/White.



FAF-H151

Size: One Size fits most: Height 5' to 5'10", Weight 90 to 155 lbs.

Color: Black/White/Red.

Stretch Polka Dot Cotton Jersey body with peek-a-boo cups and crotchless/open back bottom. Satin Ribbon bows decorating front of the garment and the waist. Hook and eye closure back.



FAF-H155

Size: One Size fits most: Height 5' to 5'10", Weight 90 to 155 lbs.

Color: Black/Red/White.

Underwire Stretch Lace and Polka Dot Cotton Jersey bra with Faux Pearl Beads with matching crotchless briefs. Hook and eye closure back and neck ties.



FAF-H153

Size: One Size fits most: Height 5' to 5'10", Weight 90 to 155 lbs.

Stretch Lace and Lycra Net body with elastic straps and Satin Ribbon bows. Neck and bra ties back.

Color: Fuchsia/Black.



FAF-H152

Satin Ribbon and Stretch Lace body with bows comes with hook closure and halter neck ties.

Size: One Size fits most: Height 5' to 5'10", Weight 90 to 155 lbs.

Color: Black/Purple.



FAF-H145

Size: One Size fits most: Height 5' to 5'10", Weight 90 to 155 lbs.

Color: Black/Blue-green.

Stretch Lace and Lycra Net underwire chemise with sexy back garters. Leg accessory # FAF-H102 is not included.



FAF-H142

Polka Dot Cotton Jersey chemise with Peek-a-Boo top and a popular X skirt bottom with open back. Faux Pearl Bead detail front. Satin Bows details.

Size: One Size fits most: Height 5' to 5'10", Weight 90 to 155 lbs.

Color: Black/White.



FAF-H149

Size: One Size fits most: Height 5' to 5'10", Weight 90 to 155 lbs.

Color: Black/White/Fuchsia.

Polka Dot Cotton Jersey chemise with Peek-a-Boo top and a popular X skirt bottom with open back. Faux Pearl Bead details front. Satin Bow adornments.



FAF-H154

*Stretch Lace and Lycra Net, Microfiber shoulder straps
teddy with open crotch/back shorts bottom and Satin
Ribbon bows.*

*Size: One Size fits most: Height 5' to
5'10", Weight 90 to 155 lbs.*

Color: Black/White.



FAF-H147

Size: One Size fits most: Height 5' to 5'10", Weight 90 to 155 lbs.

Stretch Lace and Plastic Chain accessory front body with open buttocks back.

Color: Black/White.



FAF-H144

Navy Blue Lace Peek-a-Boo set with contrasting elastic trim and matching crotchless bottom. Lots of Satin Ribbon bows.

Size: One Size fits most: Height 5' to 5'10", Weight 90 to 155 lbs.

Color: Navy Blue/Burgundy.



FAF-H163

Size: One Size fits most: Height 5' to 5'10", Weight 90 to 155 lbs.

Color: Black/Purple.

Stretch Lace crotchless body with Loop Elastic straps and Satin Ribbon Bow extras and abck ties for size fitting.

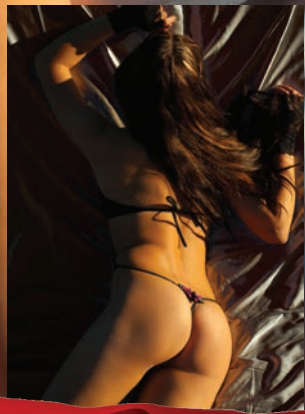


FAF-H166

Lycra Net sleepwear chemise with side ties for size fitting. Fingerless gloves style FAF-H137 is not included.

Size: One Size fits most: Height 5' to 5'10", Weight 90 to 155 lbs.

Color: Black.



FAF-H170

Size: One Size fits most: Height 5' to 5'10", Weight 90 to 155 lbs.

Color: Black/Fuchsia.

Lycra Net micro thong body with Satin Ribbon bows and back ties. Fingerless gloves style FAF-H137 is not included.



FAF-D107

Crotchless Stretch Lace g-string with Fuchsia beads and Satin Ribbon bows.

Size: One Size fits most: Height 5' to 5'10", Weight 90 to 155 lbs.

Color: Fuchsia/Black.



FAF-H180

Size: One Size fits most: Height 5' to 5'10", Weight 90 to 155 lbs.

Faux Pearl Bead crotchless g-string with Satin Ribbon bows. Choker style FAF-H194 is not included.

Color: Black/Grey.



FAF-H174

Lace and Faux Pearl beads skirty thong with open crotch. Choker style FAF-H194 is not included.

Size: One Size fits most: Height 5' to 5'10", Weight 90 to 155 lbs.

Color: Black/Beige.

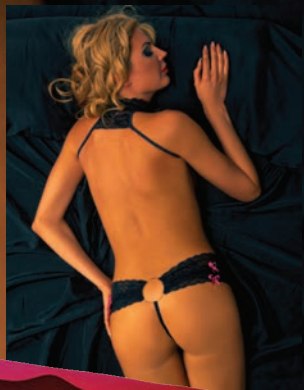


FAF-H176

Size: One Size fits most: Height 5' to 5'10", Weight 90 to 155 lbs.

Color: Red/Rose.

Red Stretch Lace and Faux Pearl Beads thong with huge ring detail front and back has features open crotch and Satin Ribbon bow details.



FAF-H178

Black Stretch Lace and Faux Pearl Beads thong with huge ring detail front and back has features open crotch and Satin Ribbon bow details. Choker style FAF-H194 is not included.

Size: One Size fits most: Height 5' to 5'10", Weight 90 to 155 lbs.

Color: Black/Fuchsia.



FAF-H185

Size: One Size fits most: Height 5' to 5'10", Weight 90 to 155 lbs.

Stretch Lace micro hipster shorts with Satin Ribbon bow.

Color: Fuchsia/Lite Pink.





FAF-H186

Ruffle Elastic lace up thong with open crotch. Fingerless gloves style FAF-H137 is not included.

Size: One Size fits most: Height 5' to 5'10", Weight 90 to 155 lbs.

Color: Black/Purple.



FAF-H187

Size: One Size fits most: Height 5' to 5'10", Weight 90 to 155 lbs.

Color: Multicolor/Black/Lite Pink.

Printed Satin Ribbon almost invisible crotchless panties with elastic cord side straps and Satin Ribbon bows. Fingerless gloves style FAF-H137 is not included.



FAF-H188

Lycra Net crotchless panties with criss cross front straps. Fingerless gloves style FAF-H137 is not included.

Size: One Size fits most: Height 5' to 5'10", Weight 90 to 155 lbs.

Color: Fuchsia.



FAF-H189

Size: One Size fits most: Height 5' to 5'10", Weight 90 to 155 lbs.

Color: Black/Blue-green/Grey.

Faux Pearl Bead crotchless g-string with Satin Ribbon bows and butterfly style back. Fingerless gloves style FAF-H137 is not included.



FAF-H190

*Crotchless lace up thong with Satin Ribbon ties.
Fingerless gloves style FAF-H137 is not included.*

*Size: One Size fits most: Height 5' to 5'10",
Weight 90 to 155 lbs.*

Color: Salmon Pink/Black.



FAF-H192

Size: One Size fits most: Height 5' to 5'10", Weight 90 to 155 lbs.

Crotchless lace up thong with Satin Ribbon ties.

Color: Lite Pink/White.



FAF-H164

Underwire Stretch Lace bridal lingerie chemise with Satin Ribbon Bow adornments and garters in the back. Hook and eye closure bra part and neck ties for size fitting.

Size: One Size fits most: Height 5' to 5'10", Weight 90 to 155 lbs.

Color: White/Beige.





FAF-H177

Stretch Lace lace up thong with wide hip panels features open crotch and satin Ribbon lacing up ties. Fingerless gloves style FAF-H172 and choker FAF-H196 are not included.

Size: One Size fits most: Height 5' to 5'10", Weight 90 to 155 lbs.

Color: White/Blue-green.



FAF-H175

Size: One Size fits most: Height 5' to 5'10", Weight 90 to 155 lbs.

Color: White/Blue-green.

Stretch Lace and Faux Pearl Beads thong with huge ring detail front and back has features open crotch and Satin Ribbon bow details. Fingerless gloves style FAF-H172 and choker FAF-H196 are not included.



FAF-H173

Stretch Embroidered Lace and Faux Pearl beads bridal lingerie panties. Briefs cut with open crotch and back. Satin Ribbon back ties for size fitting. Fingerless gloves style FAF-H172 and choker style FAF-H196 are not included.

Size: One Size fits most: Height 5' to 5'10", Weight 90 to 155 lbs.

Color: White.



FAF-H179

Size: One Size fits most: Height 5' to 5'10", Weight 90 to 155 lbs.

Color: White.

White Stretch Lace and Faux Pearl g-string with huge Satin Ribbon bow in the back. Fingerless gloves style FAF-H172 and choker FAF-H196 are not included.



FAF-H196

Size: One Size fits most: Height 5' to 5'10", Weight 90 to 155 lbs.

Color: White.

Stretch Lace and Satin Ribbon Trim Choker neck accessory with Satin Ribbon ties in the back. Fingerless gloves style FAF-H172 is not included.



FAF-H195

*Stretch Lace padded with Cotton Jersey sleeping mask
with Satin Ribbon detail and elastic microfiber ties.
Choker style FAF-H194 is not included.*

*Size: One Size fits most: Height 5' to
5'10", Weight 90 to 155 lbs.*

Color: Black.



FAF-H193

Size: One Size fits most: Height 5' to 5'10", Weight 90 to 155 lbs.

Stretch Lace padded with Cotton Jersey sleeping mask with Satin Ribbon detail and elastic strap.

Color: Abricot Sand/Pink.



FAF-H194

Stretch Lace and Satin Ribbon Trim Choker neck accessory with Satin Ribbon ties in the front.

Size: One Size fits most: Height 5' to 5'10", Weight 90 to 155 lbs.

Color: Black.



FAF-H102

Adjustable Stretch Elastic leg accessory with Satin Ribbon bows. Chemise style FAF-H145 is not included.

Size: One Size fits most: Height 5' to 5'10", Weight 90 to 155 lbs.

Color: Black.



www.falingerie.com

© 2013-2014 FEARLESS AND FUN LINGERIE. ALL RIGHTS RESERVED