



Fearless & Fun

... LINGERIE ...

Before Sunrise



H057
LACE-UP FRONT AND BACK
CROTCHLESS PANTIES

Beautiful lace side panels with lace-up front and back panties. Comes Packaged. Color: Hot Pink/Black.

One Size fits most: Height 5' to 5'10", Weight 90 to 155 lbs.



017
CROSS OPEN FRONT AND
BACK HIPSTER PANTIES

*Cross open front and back
hipster sheer mesh panties.
Comes Packaged.
Color: Black/Hot Pink.*

*One Size fits most: Height 5' to
5'10", Weight 90 to 155 lbs.*

*revealing sheer
hipster*



D034
ALMOST INVISIBLE MICRO
G-STRING

Playful crotchless micro g-string with almost invisible waist straps and very small side bows.

*Comes Packaged.
Color: Black/Hot Pink.*

One Size fits most: Height 5' to 5'10", Weight 90 to 155 lbs.



D058
CUT-OUT CHEEKS LACE
SHORTS ADELLA

Peek-a-boo design shorts with Svarovski crystals and Huge red color bows features crotchless front with straps for that exotic look. Packed in exclusive magenta gift box. Color: Black/Red.

One Size fits most: Height 5' to 5'10", Weight 90 to 155 lbs.



D059
GARTER BELT AGNES

Victorian style garter belt features lace-up front trimmed with rosette bow and very rich and sexy design rear. Shown with No. L093 Choker Necklace. Packed in exclusive magenta gift box. Color: Red/Black.

One Size fits most: Height 5' to 5'10", Weight 90 to 155 lbs.



018
CROTCHLESS LACE-UP
HIPSTER PANTIES BEAUTIFUL
LOLA

Panties feature lace-up front and back details, beautiful thin lace with low rise waist line. Comes Packaged. Color: Red/Black.

One Size fits most: Height 5' to 5'10", Weight 90 to 155 lbs.

lacy reds





L081
STRAPPY BLACK BODY
HELENE

Body features thin black lace cups and black straps with micro g-string bottom. Contrasting bows in the front and back. Packed in exclusive magenta gift box. Color: Black/Copper.

One Size fits most: Height 5' to 5'10", Weight 90 to 155 lbs.



L080
KINKY CROSS STRAP BODY
HATTIE

Body features diagonal cross details and lots of straps all over the body. Packed in exclusive magenta gift box. Color: Black/Gold.

One Size fits most: Height 5' to 5'10", Weight 90 to 155 lbs.

bold and unpredictable



035
THIN FLORAL LACE
CROTCHLESS G-STRING

Thin floral lace crotchless g-string with gold color side rings and satin bow in the front.

*Comes Packaged.
Color: Black.*

One Size fits most: Height 5' to 5'10", Weight 90 to 155 lbs.



D057
PEARL CROTCHLESS
G-STRING ABIGALE

Swarovski crystal and faux pearl beads crotchless g-string features strappy design back with minimal rear coverage and victorian style stretch lace front.

*Comes Packaged.
Color: Black/White.*

One Size fits most: Height 5' to 5'10", Weight 90 to 155 lbs.



D066
VICTORIAN G-STRING
CONSTANCE

Stretch rose lace front panels and minimal coverage strappy rear with side bows. Extravagant design for dear-to-wear look. Comes Packaged. Color: Navy Blue/Burgundy.

One Size fits most: Height 5' to 5'10", Weight 90 to 155 lbs.



I071
VICTORIAN CHEEKY LOOK
G-STRING GARTER BELT
FRANCES

Extravagant and sexy g-string features lots of beautiful straps for hip coverage, bows and beautiful color match for laces.

*Garter holders attached.
Comes Packaged.*

Color: Navy Blue/Burgundy.

One Size fits most: Height 5' to 5'10", Weight 90 to 155 lbs.

aristocratic feel



taste of sin



1073
PEEK-A-BOO NAVY BLUE
BODY ELLA

Stretch rose lace front panels and minimal coverage strappy rear with lots of bows bigger and small. Extravagant design for dear-to-wear look. Packed in exclusive magenta gift box. Color: Navy Blue/Burgundy.

One Size fits most: Height 5' to 5'10", Weight 90 to 155 lbs.



L061
APRICOT SAND LACE PEEK-A-BOO SET ALVA

Lace-up cups and asymmetric lace-up bottom g-string trimmed with beautiful elastic and 2 huge 7/16 inch Svarovski crystals. Bra has criss-cross shoulder straps. Made of European quality trims and apricot sand color lace (81.5% nylon, 12.5% spandex, 6% viscose). Packed in exclusive magenta gift box.

One Size fits most: Height 5' to 5'10", Weight 90 to 155 lbs.

sparkle and shine





D064
STRAPPY GARTER BELT ELIZA

Garter belt consists of straps and bows, gold color metal rings and stocking holders. Could be worn with stockings only. Packed in exclusive magenta gift box. Color: Nude/Black.

One Size fits most: Height 5' to 5'10", Weight 90 to 155 lbs.



018P
LACE UP CROTCHLESS
HIPSTER PANTIES

*Lace-up crotchless hipster
panties made of thin beautiful
lace.
Comes Packaged.
Color: Pink/Black.*

*One Size fits most: Height 5' to
5'10", Weight 90 to 155 lbs.*

men-focused



H003
FLORAL LACE AND BEAD
STRAND CROTCHLESS
G-STRING

Playful crotchless g-string has detachable beads. Comes Packaged. Color: Black.

One Size fits most: Height 5' to 5'10", Weight 90 to 155 lbs.



D033
DELICATE CAGE TWO TONE
LACE SHORTS

Delicate two tone lace shorts for everyday wear. It features cage strapping in the back. Comes Packaged. Color: White/Black.

One Size fits most: Height 5' to 5'10", Weight 90 to 155 lbs.

always sexy



D049
PEEK-A-BOO BODY WITH
LACE-UP FRONT CYNTHIA

Crotchless and cupless body with lace-up front panel features minimal coverage rear and floral lace front panel trimmed with lots of bows. Packed in exclusive magenta gift box. Color: White/Yellow-Green.

One Size fits most: Height 5' to 5'10", Weight 90 to 155 lbs.

flirty bride



H0010
BODY SUE WITH
EMBROIDERY TULLE

Body Sue features embroidered tulle details and beautiful elastic straps. Packed in exclusive magenta gift box. Color: White.

One Size fits most: Height 5' to 5'10", Weight 90 to 155 lbs.





H006
WHITE LACE G-STRING FIRST WEDDING NIGHT

White lace g-string FIRST WEDDING NIGHT with four gold color rings and beautiful lace straps. Best quality European laces and elastic bands. Comes Packaged. Color: White.

One Size fits most: Height 5' to 5'10", Weight 90 to 155 lbs.

*unforgettable
micro treat*



011
TINY THIN LACE MICRO
HIPSTER PANTIES

*Panties feature thin floral lace
and a bow detail in the front.
Comes Packaged.
Color: White/Baby Pink.*

*One Size fits most: Height 5' to
5'10", Weight 90 to 155 lbs.*



H0011
BEAUTIFUL LACE UP SET
LIANA

*Two piece set Liana features
lace up cups and g-string with
bows. Packed in exclusive
magenta gift box.
Color: Nude.*

*One Size fits most: Height 5' to
5'10", Weight 90 to 155 lbs.*

killer nude



D051
NUDE TULLE EMBROIDERED
BODY CHASTITY

Unique design body has very attractive features like cross straps and bows. Nude color tulle is close to invisible on the body. Made of 36% viscose, 9% polyester, 55% nylon embroidered tulle. Packed in exclusive magenta gift box. Color: Nude/Burgundy.

One Size fits most: Height 5' to 5'10", Weight 90 to 155 lbs.

Burgundy embroidery



1060
DIAGONAL STRAPS
EMBROIDERED THONG ALLIE

Minimal coverage thong features embroidered stretch tulle front panel, gold color metal rings and beautiful elastic diagonal straps. Made of 36% viscose, 9% polyester, 55% nylon tulle. Packed in exclusive magenta gift box. Color: Nude/Burgundy.

One Size fits most: Height 5' to 5'10", Weight 90 to 155 lbs.



D092
ALMOST INVISIBLE MICRO
G-STRING GINA

Almost invisible micro g-string GINA has purple bows and gold color straps. Comes Packaged. Color: Lilac/Gold.

One Size fits most: Height 5' to 5'10", Weight 90 to 155 lbs.



H007
ROSETTE BOWS ROMANTIC
G-STRING

*Romantic g-string with
rosettes and beautiful
embroidered tulle front detail.
Comes Packaged.
Color: Nude/Grey.*

*One Size fits most: Height 5' to
5'10", Weight 90 to 155 lbs.*



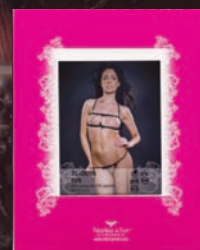
PINK
PINK PACKAGE FOR SMALL
LINGERIE PIECES

Package shows both sides of garment thru plastic. Also has rack hole on the top. All one piece garments like panties arrive packed in this type of package by default.



P001
EXCLUSIVE MAGENTA
PACKAGE BOX

Package shows front side of the garment on the back. All two piece or larger garments like chemises arrive packed in this type of package by default.



*beautiful
packages*

Visit us at
www.faflingerie.com

Back cover: Garments No. D051 and No. I073



www.fafingerie.com



TL-2011CAT

© 2010-2011 FEARLESS AND FUN LINGERIE. ALL RIGHTS RESERVED